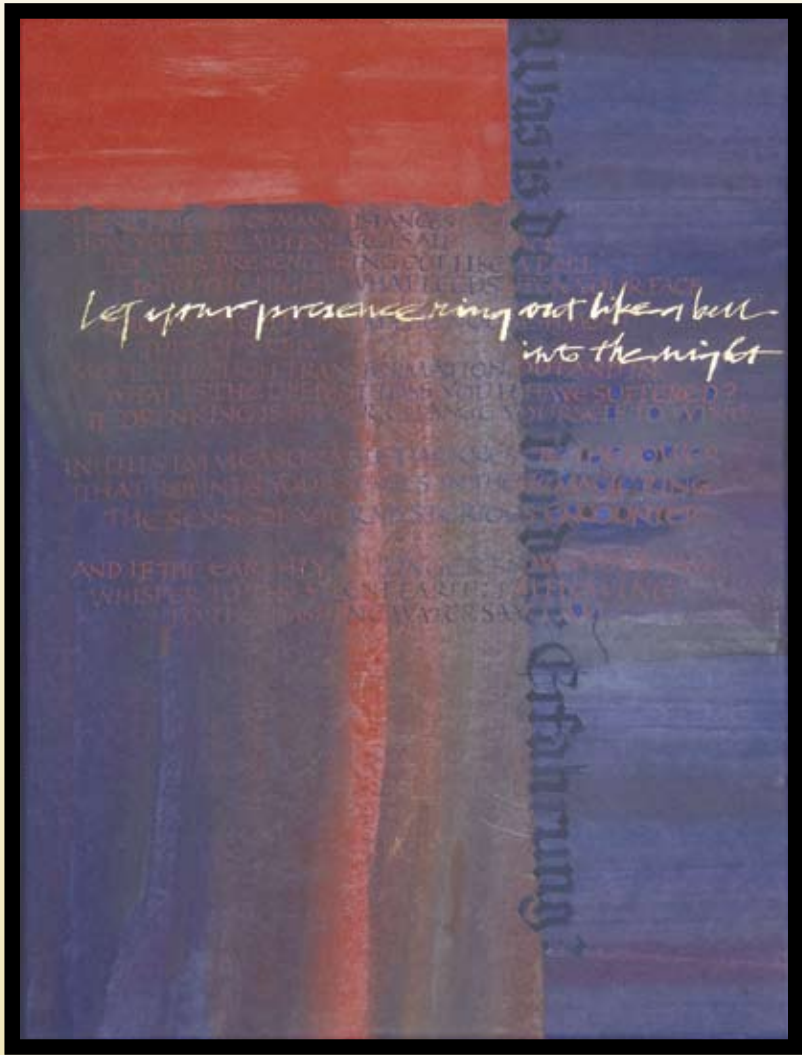


ARTS



"Silent Friend" gouache on paper



Barbara Yale-Read in Her Studio

by: Wendy Robbins

At first glance one might label Barbara Yale-Read's art as calligraphy . . . but there is more to it than that, she also incorporates painting, collage, graphics and printmaking. Inspired by poetry and song, these "mixed media" works resemble richly woven modern-day tapestries. Among the factors that make Barbara's work note worthy is her use of contemporary materials and computer technology as well as centuries old mediums like gold and copper leaf, textured handmade papers and gouache "gwash" paint, *one of the oldest mediums known to Western art, first used by the ancient Egyptians and widely used in the Middle Ages for illuminating manuscripts.* Yale-Read's layering of words and phrases deliver a message but they are also integral design elements as important visually as the placement of color and her brush marks.

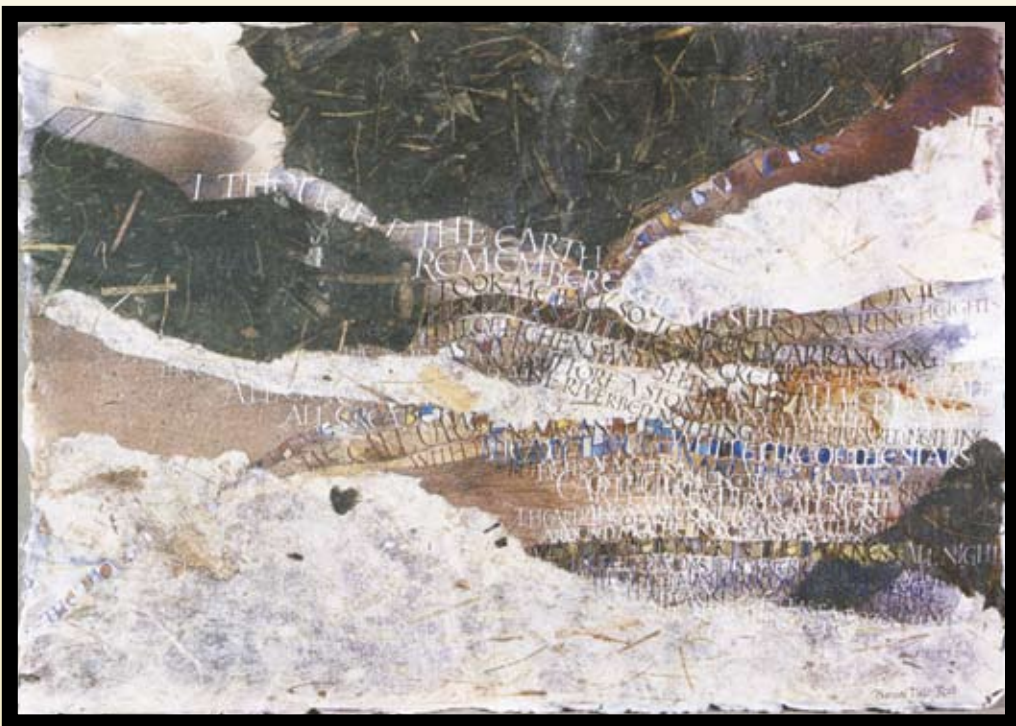
Barbara Yale-Read has exhibited internationally and is a Professor in the Fine Arts Department at Appalachian State University, her new work's "Painted Speech" will be part of the Turchin Center's Spring Exhibition Celebration opening Friday, March 5, 2010 visit <http://www.turchincenter.org> for more information. Do yourself a favor and see her works up close and personal to fully appreciate the power of the narrative, her bold use of color and the textural quality of these passionate works.



Silence: The Incomprehensible Silence

Barbara Yale-Read

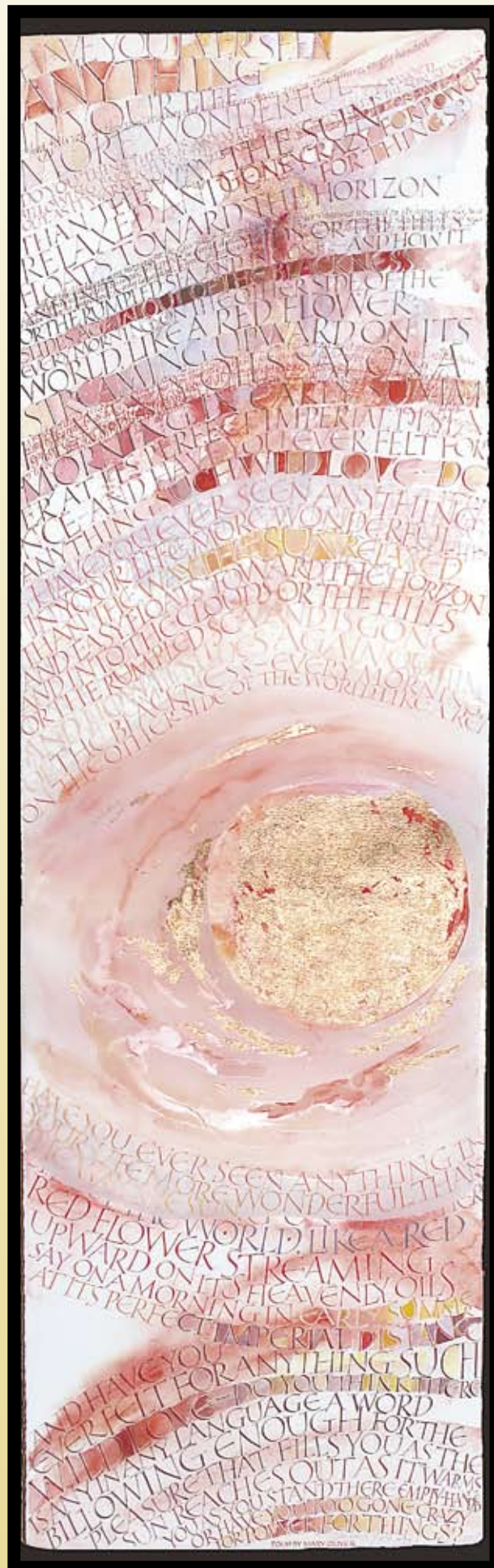
Works on Paper



"Dreamwork" currently in an exhibition at the Dept. of the Interior in Washington, DC.



What Happens? Handlettering in gouache on handmade paper



"SUNPOEM" Handlettered, with layered mylar, copper leaf, gouache, colored pencil and watercolor on watercolor paper

To find out more about Barbara Yale-Read and to view her online portfolio please visit <http://www1.appstate.edu/~yaleread/>